

ELECTRICAL, ELECTRONICS & INSTRUMENTATION SERVICES



+65 6861 0960

eng2@wwgengineering.com
sales@wwgengineering.com

www.wwgengineering.com

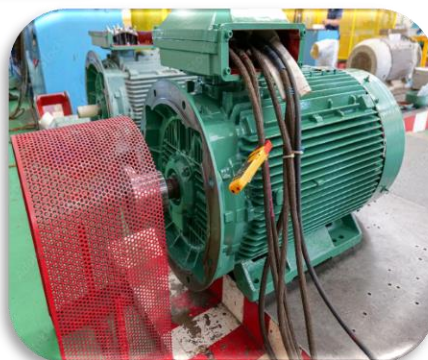
CNC MACHINE MAINTENANCE

- FANUC PLC, OKUMA PLC
- Lubrication
- Inspection of electrical connections
- Coolant system checks
- CNC machine fault detection and troubleshooting
- Drive fault analysis



MOTOR OVERHAULING

- Motor testing (winding test, load test, IR test)
- Motor rewinding
- Varnishing
- Bearing replacement
- Rotor balancing
- Load Test



PANEL BOARD DESIGN & SERVICE

EMERGENCY REPAIRS

Provide prompt and effective response to panel failures and electrical issues to minimize downtime and ensure operational continuity.

PREVENTIVE MAINTENANCE

Perform regular cleaning, tightening, and servicing of components to prevent equipment failures and ensure reliable operation.

BREAKER & FUSE REPLACEMENT

Faulty or damaged parts shall be promptly replaced to maintain safe and reliable operation.

LOAD BALANCING

Maintain proper power distribution to avoid electrical overloads and ensure system reliability.

FULL PANEL INSPECTION

Conduct thorough inspections to identify any damage, loose connections, or overheating issues.

WIRING & CONNECTION CHECKS

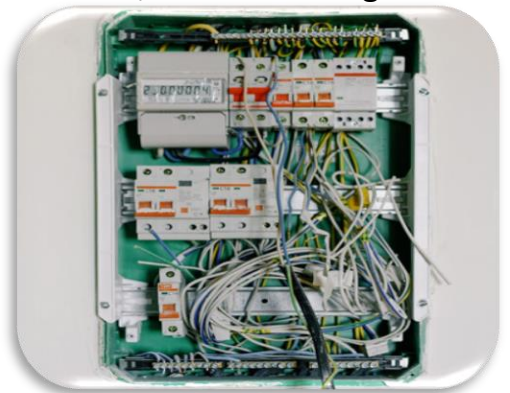
Secure all terminals and eliminate any loose connections.

UPGRADES & MODIFICATIONS

Install new circuits or update existing panels as required.

AMC CONTRACTS

Scheduled maintenance programs for homes, offices, and industrial sites.



CABLE GLANDING & TERMINATION

- RIGS & VESSELS

- Securely gland all LT cables, including CAT 5 and CAT 6 cables.
- Apply compound glanding on vessels to ensure proper sealing and protection.

PPE AND WORKPLACE :

Safety shall never be compromised before starting any job.

Ensure that the Permit to Work system is strictly implemented and that the workplace is equipped with the approved drawings prior to commencement of work.

INSTALLATION & I R TESTING :

All laid cables shall be pre-checked for continuity and insulation resistance.

Appropriate test voltages shall be applied according to the type of cable—power or control—to verify cable integrity prior to termination and commissioning.

LAYING AND DRESSING :

Lay the cables safely as per the approved drawings.

Properly dress and secure the cables using suitable cable ties, depending on the workplace conditions.

GLANDING AND TERMINATION :

Securely gland both compression and non-compression glands of power and control cables.

Use proper cable lugs with suitable color codes to ensure correct identification and protection.

Crimp the cables securely with the lugs using the appropriate crimping tools.

Mandatory housekeeping must be carried out upon completion of the job.

CONFINED SPACE AND WORK AT HEIGHT :

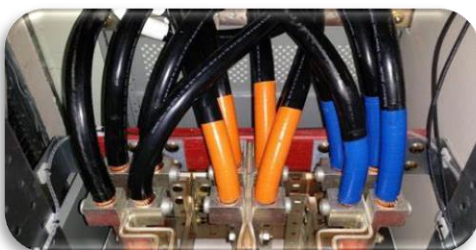
Ensure full compliance with the required permits and safety procedures for confined space work and wear an appropriate body harness with fall protection equipment when working at height.

UPGRADING & MODIFICATION :

If any additional modifications are required in the workplace, we will obtain approval from the customer and proceed with the changes if they are deemed suitable.

CHECKING AND COMMISSIONING :

Perform a proper continuity test on all cables before and after termination. Use an approved checklist to ensure complete and accurate commissioning from the cable's starting point to its end point.



AIR COMPRESSOR AND DIESEL GENERATOR

Annual and Periodic Maintenance.

Services Include:

- General Inspection. Check the overall condition of the generator
- Oil and Filter Maintenance
- Coolant System Check
- Fuel System Maintenance
- Battery Inspection
- Exhaust System Examination
- Air Filter Maintenance
- Electrical System Check
- Testing & Troubleshooting
 - Comprehensive testing with advanced equipment to ensure safety and functionality.
- Preventive & Corrective Maintenance
 - Regular checks and quick repairs to minimize downtime.



CCTV INSTALLATION

New system installations and routine servicing/maintenance.

CCTV Installation and servicing

Provide new CCTV installation and servicing per customer specifications, including camera placement planning, cable routing, recording system setup, and regular maintenance.

Planning and Site Assessment

Determine the optimal camera locations by considering key areas of focus, lighting conditions, and potential obstructions.

Cabling

Install power and data cables from cameras to the DVR/NVR, following proper routing practices and ensuring appropriate cable protection.

Mounting Cameras

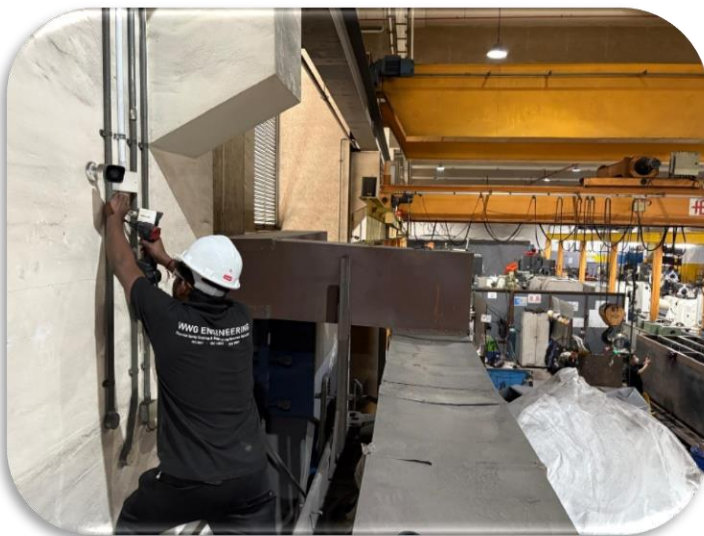
Install power and data cables from the cameras to the DVR/NVR, following proper routing practices and ensuring adequate cable protection.

DVR/NVR Setup

Connect the DVR/NVR to the cameras and a monitor, and configure the system for recording, playback, and remote access.

Testing and Commissioning

Verify that all cameras are functioning properly, check video quality, and test remote access and motion detection features.



SHIPYARD SECTOR

Electrical, Electronics & Mechanical
(Maintenance, Installation & Repair)

